

## CRUISECRAFT III

# welcome ABOARD

## WE WOULD LIKE TO WELCOME YOU TO OUR CRUISE CRAFT III HOUSEBOAT.

Twin Anchors Houseboats encourages the Captain and the Co-Captain to use this manual as a guideline for operations of the houseboat. It is their responsibility to ensure all houseboat passengers are aware of the Charter Agreement, Policies, Rules and Regulations that are reviewed upon check in and orientation.

This manual is a guide to help you refresh your memory in regards to the houseboat operations previously reviewed with members of Twin Anchors Staff. We have also included other information that may be of interest to you and your crew members.

Please respect Shuswap Lake by leaving only footprints on the beaches, contain refuse at all times to avoid distribution into the lake, and be considerate of other people on vacation.

***- Have a wonderful vacation!***





## You Should Know...

*This Manual contains instructions and guidelines for operating your Twin Anchors houseboat. Following the instructions and guidelines contained in the Manual should ensure that you have a safe and enjoyable holiday. The instructions and guidelines contained in the Manual are in no way exhaustive, however, and you are responsible to occupy and operate your houseboat in a prudent and safe manner at all times.*

# TABLE OF CONTENTS

## **1. RADIO OPERATIONS**

---

- 1.1 Prior to Calling in on the Radio
- 1.2 Radio Information
- 1.3 Emergency Procedures

## **2. STARTING PROCEDURES**

---

- 2.1 Preparation Before Starting
- 2.2 Engine Starting Procedures
- 2.3 Operating the Houseboat from Upper Deck
- 2.4 Font Console
- 2.5 Fuel
- 2.6 Fuel Transfer Station

## **3. MANEUVERING THE HOUSEBOAT**

---

- 3.1 Steering the Cruisecraft
- 3.2 Beaching
- 3.3 Docking
- 3.4 Storm Procedures
- 3.5 Propeller Damage
- 3.6 Accident or Breakdown

## **4. ELECTRICAL SYSTEM AND COMPONENTS**

---

- 4.1 Batteries
- 4.2 Breaker Panel
- 4.3 Battery Volts
- 4.4 Xantrex Remote Panel:
- 4.5 Generator (Genset)

## **5. APPLIANCES**

---

- 5.1 Refrigerator
- 5.2 Storing Food
- 5.3 Stove and Oven Operation
- 5.4 Hot Water Heater
- 5.5 Propane Furnace
- 5.6 Air Conditioning
- 5.7 BBQ
- 5.8 Fireplace
- 5.9 Dishwasher
- 5.10 Washer & Dryer
- 5.11 Stereo on Upper Deck
- 5.12 Home Theatre / Stereo System

## **6. WATER SUPPLY**

---

- 6.1 Fresh Water

## **7. BATHROOM FACILITIES (THE HEAD)**

---

- 7.1 Toilet
- 7.2 Chemicals
- 7.3 Toilet Paper
- 7.4 Shower

## **8. HOT TUB & SLIDE**

---

- 8.1 Filling Your Hot Tub
- 8.2 Circulation for Heating
- 8.3 Slide

## **9. SAFETY EQUIPMENT & SAFE BOATING PRACTICES**

---

- 9.1 Drugs, Alcohol and Boating
- 9.2 Life Jackets & Life Ring
- 9.3 Safe Boating Practices
- 9.4 Fire Extinguishers
- 9.5 First Aid Kits

## **10. TROUBLE SHOOTING**

---

- 10.1 Starting Procedures
- 10.2 Water Supply
- 10.3 Toilet
- 10.4 Electrical System
- 10.5 VHF Radio
- 10.6 Generator
- 10.7 Charging Systems
- 10.8 Fireplace Not Working
- 10.9 Hot Tub Problems

## **11. FIRST AID PROCEDURES**

---

## **12. BEAR AWARE INFORMATION**

---

## **13. PARKS INFORMATION**

---

## **14. B.C. AMBULANCE SERVICE INFORMATION**

---

## **15. END OF DAY PROCEDURES**

---

## **16. END OF TRIP PROCEDURES**

---

# 1. RADIO OPERATIONS

---

**DO NOT START UNTIL TEMS HAVE BEEN CHECKED AS STATED BELOW**



If your radio does not appear to be working, check to make sure the power is on (push in the large black button on the front of the radio)

## 1.1 **PRIOR TO CALLING IN ON THE RADIO:**

---

1. Know the name of the boat you are on.
2. Location of the houseboat.
3. Have Captain/Co-Captain call in.

During the day from 8:00 am thru to 6:00 pm feel free to contact our base with any questions you may have.

## 1.2 **RADIO INFORMATION:**

---

**IF YOU STARTED YOUR VACATION IN SICAMOUS;**

- Channel 1: Boat to Boat Channel
- Channel 2: Boat to Twin Anchors Base
- Channel 3: Weather Channel

**IF YOU STARTED YOUR VACATION IN SALMON ARM BAY**

- Channel 1: Boat to Salmon Arm Bay/and/or Salmon Arm Bay Boat to Salmon Arm Bay Boat
- Channel 2: Boat to Twin Anchors Base
- Channel 3: Weather Channel

## 1.3 **EMERGENCY PROCEDURES:**

---

We do monitor the radio 24 hrs a day for emergencies (**After 6:00 pm, please do not call base unless you have a Medical Emergency or a situation that needs immediate attention**). **IF YOU REQUIRE 911 SERVICE:**

1. Know your location
2. Have one person, preferably Captain/Co-Captain, communicate with base, and remain at helm station for instruction.
3. 911 service on the lake may take as long as 1-3 hours depending on your location.

**THE SERVICE BOAT WILL ONLY ATTEND MEDICAL EMERGENCIES AFTER DARK, DO NOT EXPECT TO HAVE A SERVICE CALL AFTER DARK.**

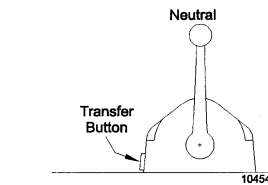
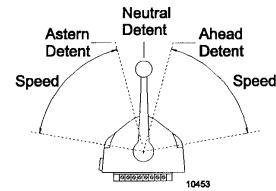
## 2. STARTING PROCEDURES

2.1



Shifter

TRANSFER BUTTON

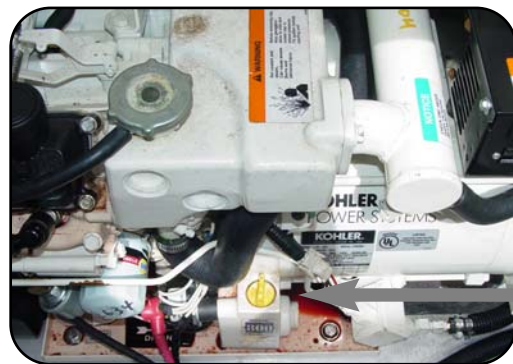


Throttle

### PREPARATION BEFORE STARTING

DO NOT START YOUR ENGINE UNTIL ALL ITEMS HAVE BEEN CHECKED BELOW:

- Engine must not be run if drive leg is not completely down.
- Check oil in Generator and Engine.
- If low, call base for service boat.
- Inspect bilge for water or oil prior to starting.
- Make sure rear area behind boat is clear of swimmers.
- Turn on engine compartment blower for 3 to 5 minutes before starting engine, failure to do so may cause gasoline fume explosion.
- Check to be sure that the engine leg and propeller are lowered into the water completely. This is done by pushing the power trim switch down until drive leg is completely lowered.
- The power trim switch is located in the engine compartment.



Kohler Genset



Mercury Engine



Power Trim Switch

## **2.2 ENGINE STARTING PROCEDURES**

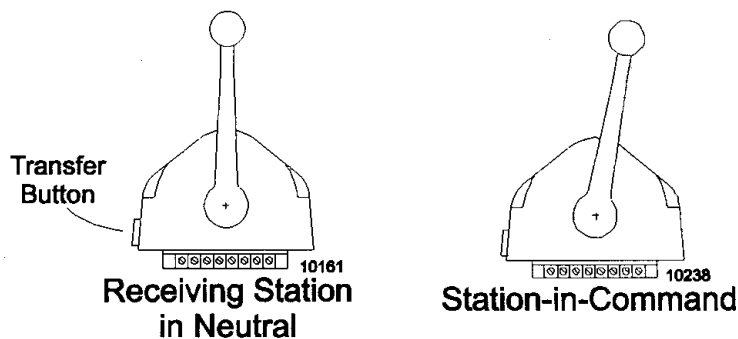
---

- 1 Turn the key to the "ON" position; you will hear an audible "alarm" sound. Push the transfer button at the shifter base. Let go and wait for a red solid light to appear on the shifter.
- 2 Hold the transfer button (push and hold in) at the shifter base while moving the throttle lever from neutral into the forward position (about 1/4 throttle).
- 3 You will notice the solid red light on the shifter is blinking, this is the neutral start position. If engine is cold move throttle all the way forward and back slowly 2 times, then move forward 1/2 way - turn key on and pull throttle back to approximately 1200 rpm.
  - The further forward the shifter lever is, the faster the boat will go. Remember, we do not recommend exceeding speeds of 2500 R.P.M. in forward or reverse because of fuel consumption concerns.
  - Pulling the shifter back towards you past neutral position will decrease speed and put you into reverse. The further back you pull the shifter the more power you will apply.
  - Remember not to "over-rev" the engine in reverse, (above 2200-2500 R.P.M. you will hear an unusual sound from the back end of your boat), this could damage the engine. Use short sustained bursts of throttle to slow and stop your boat.
  - To warm-up the engine before putting it in gear allow the engine to run for about 5-10 minutes.

## 2.3 OPERATING THE HOUSEBOAT FROM UPPER DECK

---

- The upper controls are to be used strictly for cruising down the lake.
- Do not use the upper controls when beaching, docking your houseboat or cruising through the Sicamous Channel - you have no radio communication from the upper deck.
- In order to take command of the upper helm station simply put your boat into neutral downstairs, go to the upper helm, press the button located on the front of the shifter box and you will see the red light appear on the shifter. You now have control at the upper helm. Repeat same process down at lower helm when ready to resume control of that station. This makes it impossible to control the boat from both positions at same time.
- Resume controls at the lower helm before docking, beaching or entering the Sicamous Channel.



**IMPORTANT !**

UNDER NO CIRCUMSTANCES SHOULD YOU ATTEMPT TO DOCK THE HOUSEBOAT WHILE DRIVING FROM THE UPPER COMMAND BRIDGE!

## 2.4 FRONT CONSOLE - LOWER HELM STATION

### TRIM

The trim should always be completely down when running the engine. We recommend leaving the leg in this position when you are beached. The only time you should raise the leg is to check your prop for damage or if your boat is turned sideways on a beach. Make sure your engine is not running at any time when the leg is raised.

### RPM GAUGE

We recommend a cruising speed of 1800 - 2200 R.P.M.'s. This speed will give you the most efficient fuel consumption.

### OIL GAUGE

MERCUISER: range should be 30-60 while operating.

### TEMPERATURE GAUGE

MERCUISER: range should be 0-175 while operating

### FUEL GAUGE

Do not rely on your fuel gauge for accuracy. Your fuel must be inspected when you depart to make sure that it is full.



## **2.4 FRONT CONSOLE - LOWER HELM STATION continued...**

### **BATTERY**

- Indicates alternator condition and battery voltage and /or charging rate of the

### **IGNITION**

- **Prior to starting engine be sure no one is in the water.**
- The key has three (3) positions.
- **START:** Position is spring loaded and must be held in this position until the engine starts. Never turn the key to start position if the engine is already running.
- **RUN:** After the engine starts, release the key, it will automatically return to the 'run' position.
- **OFF:** When you turn off your houseboat you should remove the key. The key should be hung on the hook located to your left between the helm station and the sliding glass door.

### **RUNNING LIGHTS**

- Your houseboat needs to be BEACHED 1 HOUR BEFORE DARK.
- Running lights are only to be used in extreme emergencies. Contact Twin Anchors Base for assistance.

### **BLOWER**

- Your blower should be turned on for 3-5 minutes before starting your engine.
- Turn your blower **OFF** when you start the engine.
- Never turn your blower on before refueling
- Always run your blower for 5-10 minutes after refueling.

## 2.5 FUEL

---

The fuel tanks are very large and you should not need to refuel during your trip unless you are out for more than a week, or you have traveled a long distance at high speeds (Normal cruising speed is 2000 RPMs). There are approximately 250 gallons of fuel (125 per side) on the CruiseCraft II.

The CruiseCraft II engine and generator run from one tank only. You have to refill your tank using your fuel transfer station. Fuel must be transferred when your main engine and generator tank reach 1/4 tank.

DUE TO THE VARIOUS GRADES OF MARINE FUEL, ALL REFUELING MUST BE DONE AT TWIN ANCHOR'S MARINAS IN SICAMOUS OR SALMON ARM BAY.

## 2.6 FUEL TRANSFER STATION

---

1. Turn 12 volt breaker labelled 'fuel transfer' ON.
2. Pull emergency shut-off switch out. Located on the rear deck outer wall.
3. Turn the pump ON by removing the nozzle from its holder and pushing the lever up.

NOTE: THE NOZZLE HOLDER AND SWITCH ARE DESIGNED SO THE PUMP MOTOR CANNOT OPERATE WITH THE NOZZLE IN THE HOLDER.

4. Insert the nozzle into the receiving tank or container.
5. Squeeze the handle to start fuel flow.
6. This pump is designed to self-prime. If it does not begin to deliver fuel within 15 to 20 seconds after turning the pump ON and opening the nozzle, turn OFF.

7. An automatic bypass valve prevents pressure buildup when the pump is ON with the nozzle closed.

**CAUTION: To avoid pump damage, do not run the pump for more than ten minutes with the nozzle closed.**

8. Do not overfill the tank. Repeated attempts to "top off" the tank with an automatic nozzle may result in overfilling.
9. After dispensing fuel, release the nozzle handle, turn the pump OFF and return the nozzle to its holder.

**CAUTION: The duty cycle of this pump is 30 minutes ON and 30 minutes OFF. Allow 30 minutes to cool.**

**REMINDER**

IF YOU ARE USING THE PUMP FOR PERSONAL WATERCRAFT, YOU NEED TO KEEP AN EYE ON THE FUEL TANK LEVELS.

## 3. MANEUVERING THE HOUSEBOAT

---

### 3.1 STEERING THE CRUISECRAFT

---

The CruiseCraft III is a large houseboat and can easily be moved around with wind and water currents. If you see a storm coming up -make sure your houseboat is beached right away in a safe location.

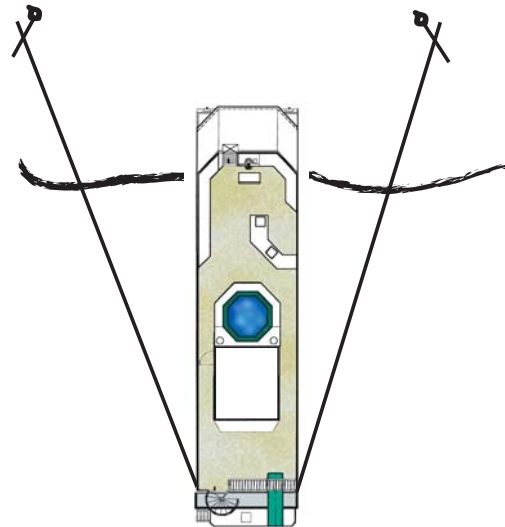
- When beaching, docking or moving around in tight areas, always have one person at the back of the houseboat and a person at the front to provide you with assistance.
- Steering your houseboat is different from steering an automobile, the houseboat steers from the rear, causing the rear of the boat to swing wide. Make sure there is enough room to turn in a tight area.
- Unlike a road vehicle, it is not possible to coast through a turn. Wind or water currents affect steering, apply additional throttle to compensate, this gives you more steering control.
- When making a sharp turn or U-turn, move the steering wheel in the direction you are turning before putting the houseboat in gear. After traveling forward, put the houseboat in neutral and turn the steering wheel quickly in the opposite direction and then place the shift lever in reverse. Continue this procedure until you have made the turn.

### 3.2 BEACHING

---

#### **THE HOUSEBOAT MUST BE BEACHED EVERY NIGHT 1 HOUR BEFORE DUSK.**

1. Choose a spot that is well protected from wind, waves and **AWAY FROM ROCKS**. Do not choose shallow areas, doing so may cause damage to the prop- resulting in extra charges to you.
2. A trial run reasonably close to shore will confirm this. Make sure there are no sharp rocks that will damage the pontoons or hull.
3. If the beach checks out okay, approach the spot you have chosen at the slowest speed possible 900-1000 RPMs. Make sure you approach the beach as straight as possible.
4. When the front of the pontoons make contact with the ground, leave the boat in forward gear, run the engine up to 2000 RPMs. This will hold your houseboat to the beach while someone else pounds in the stakes and ties up the ropes. One person should remain at the helm station until the boat is secured.



### **3.2 BEACHING CONTINUED...**

---

5. If the boat turns sideways on the beach put your engine in neutral and turn your engine off, Raise Outdrive/Leg of your engine. Try to push the back end of the boat out. Once the back end of the engine is far enough out- lower the leg of engine (see starting procedures trim switch section) restart your engine and back out. Reapproach the beach as straight as possible.

***See knot tying techniques on page 44.***

6. Your stakes should be pounded in at a 45 degree angle away from both sides of your boat. Be sure to pound them at an angle away from the houseboat with no more than 5-6 inches above the ground. Pull your long lines around the stakes and make a loop knot. Do not tie extra knots or loops in the rope. Wrap around and knot 3-4 times until ropes are secure. Do not leave any slack in the ropes.
7. After you have tied up and turned the engine off, make sure your key is in the off position. A key left in the ON position will drain your battery.

**{ WARNING!**

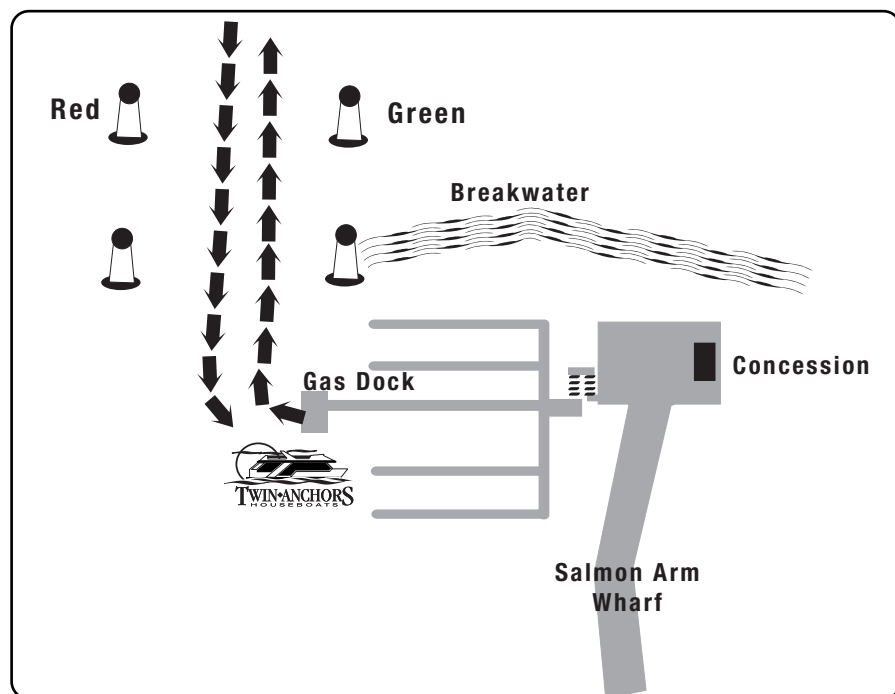
**DO NOT TRY TO BEACH OR LEAVE THE BEACH IN STRONG WINDS.  
WAITING IT OUT WILL BE MUCH SAFER FOR YOU AND YOUR BOAT.**

### 3.3 DOCKING - SALMON ARM BAY

Plan ahead when approaching a dock so that you are not caught at the last minute by wind or current. If possible approach a dock against the wind or against the current (which ever has the most influence over the houseboat), keep your speed down so you will have better control and minimize the impact should you miscalculate your approach. Prior to coming into either Marinas please call base and ensure there is room on the dock system. Then follow these procedures:

#### APPROACH SALMON ARM BAY MARINA:

1. Stay between the red and green outer markers.
2. Visually locate flashing navigator lights at end of channel and line up one over top of the other.
3. Proceed into the channel as indicated in the diagram below.
4. Have one person at the front of the boat and one person on the back of the boat.
5. Upon reaching the dock put the boat in neutral, then in reverse to slow down, then back into neutral.
6. Tie the front line of the boat securely to the dock
7. Put shifter in forward gear and turn the wheel away from the dock- this will swing the back end of the boat towards the dock
8. Tie the rear line of the boat securely to the dock
9. Return shifter to neutral and turn off the houseboat engine.



Salmon Arm Marina

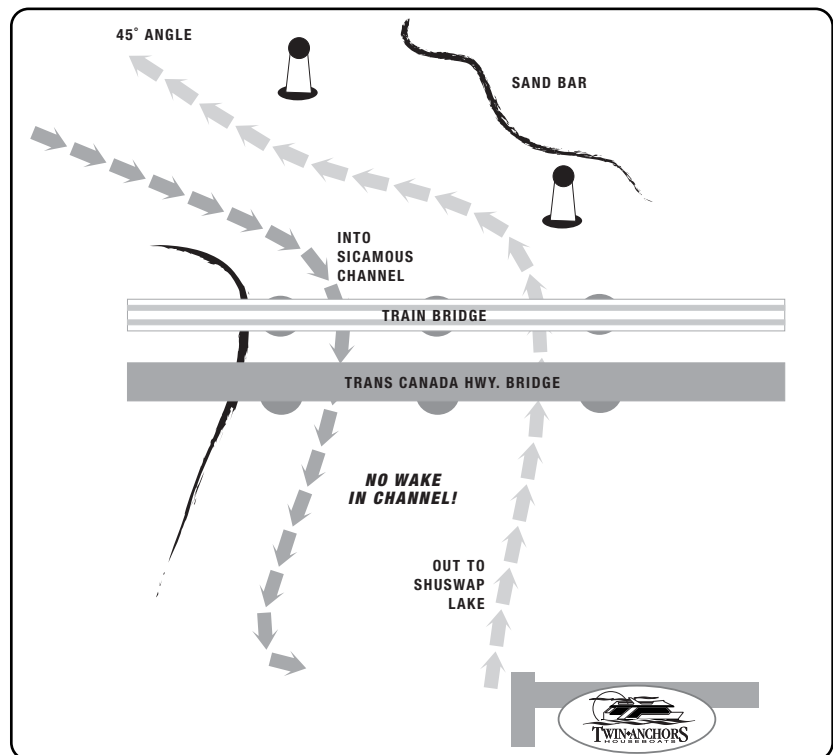
### **3.4 DOCKING - SICAMOUS**

Plan ahead when approaching a dock so that you are not caught at the last minute by wind or current. If possible approach a dock against the wind or against the current (which ever has the most influence over the houseboat), keep your speed down so you will have better control and minimize the impact should you miscalculate your approach. Prior to coming into either Marinas please call base and ensure there is room on the dock system. Then follow these procedures:

1. Have one person at the front of the boat and one person on the back of the boat.
2. Upon reaching the dock put the boat in neutral, then in reverse to slow down, then back into neutral.
3. Tie the front line of the boat securely to the dock
4. Put shifter in forward gear and turn the wheel away from the dock- this will swing the back end of the boat towards the dock
5. Tie the rear line of the boat securely to the dock
6. Return shifter to neutral and turn off the houseboat engine.

- **APPROACHING TWIN ANCHORS DOCK FROM MARA LAKE: MAKE A U-TURN PAST THE TWIN ANCHORS DOCK AND COME IN FACING SOUTH (MARA LAKE).**

- **AT CERTAIN TIMES OF THE YEAR, WATER-LEVELS ARE HIGH AND A TRAIN BRIDGE OPENING IS REQUIRED TO ENTER THE SICAMOUS CHANNEL. PLEASE CHECK WITH TWIN ANCHORS BASE PRIOR TO ENTRY.**



**Sicamous Marina**

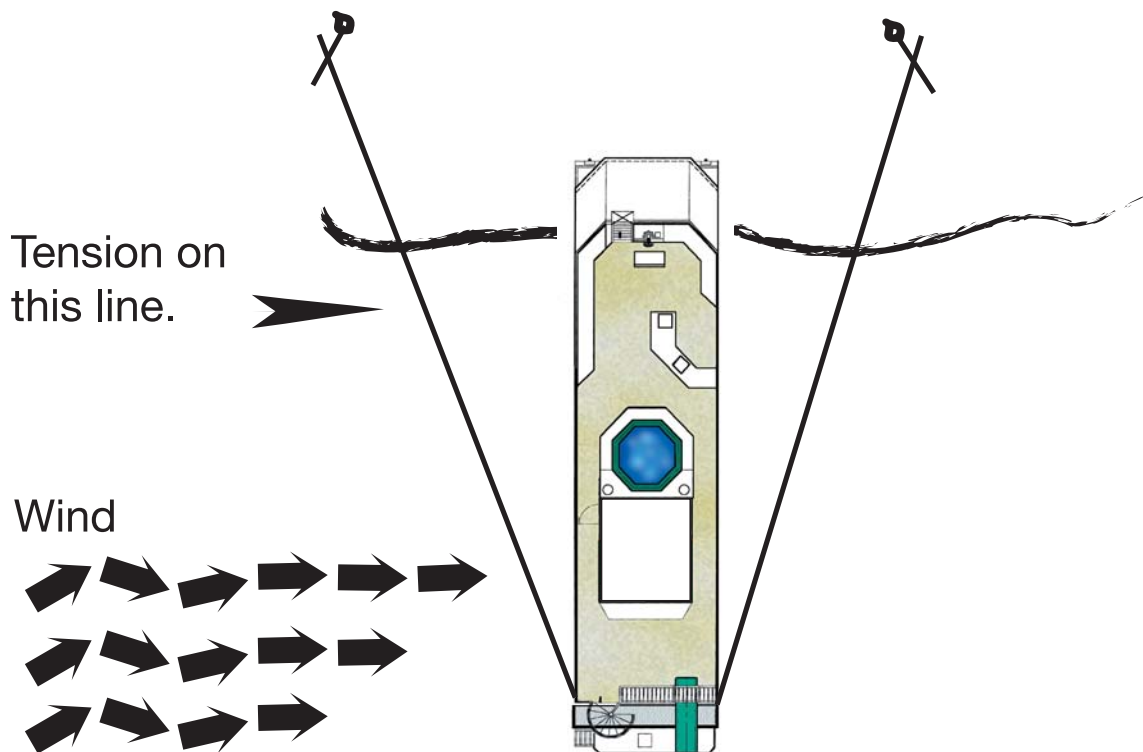
### 3.5 STORM PROCEDURES

---

Fortunately most storms on the Shuswap Lake are of short duration and move through the area very quickly. Quite often it will storm on one arm of the lake but be calm on others.

#### WHEN A STORM APPROACHES YOU HAVE 2 OPTIONS:

1. If you are near a safe and protected beach area before the wind picks up, beach the houseboat. Make sure you have your ropes at a 45-degree angle to the side of your boat and your stakes are pounded in secure with no more than six inches of stake showing. Tie your ropes with as little slack as possible. If there is a cross wind, (if the direction of the wind is towards the side of your boat) and the force of the wind is putting an unsafe amount of tension on one of your mooring lines, place the houseboat in forward gear and apply the throttle to relieve the tension. Turn your steering wheel in the same direction as the wind.
2. If you are on the lake and a storm comes up, stay out on the lake and ride the storm out. A houseboat is a very stable craft that will ride out any storm with a minimum of discomfort. The safest procedure is to head into the storm (with or against the roll of the waves) at about half speed. Keep the houseboat from turning sideways into the wind. This will minimize the side to side rocking motion of the waves. Continue to ride the storm out until it is calm enough to beach. Most storms only last about an hour or less in duration.



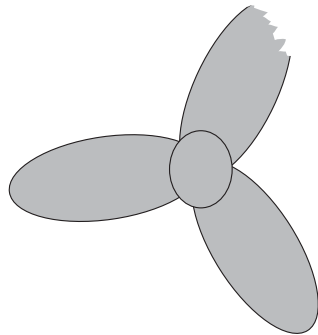
### 3.6 PROPELLER DAMAGE

---

If you should hit anything under the water causing damage to your propeller, slow the boat to idle position and place the shift lever in the neutral position. Turn the boat off and inspect the propeller for damage. Contact Twin Anchors base on Channel 2 for further instructions.

DO NOT CONTINUE TO OPERATE THE HOUSEBOAT AS IT COULD CAUSE MAJOR ENGINE AND/OR OUTDRIVE DAMAGE FOR WHICH YOU WOULD BE LIABLE. INSURANCE DOES NOT COVER NEGLIGENT ACTS, OR DAMAGE TO THE PROP.

{ WARNING!



**MINOR DAMAGE:**

You will incur a charge per blade for damaged props.

**MAJOR DAMAGE:**

Damage to more than 1/3 of the prop constitutes major damage as the prop is beyond repair.

Charges can be confirmed with TA base.

### 3.7 ACCIDENT OR BREAKDOWN

---

Twin Anchors guarantees good service to all of our customers alike. However, due to unforeseen circumstances mechanical failure does occur periodically. In the event of any malfunction, accident, or damage, you must contact **Twin Anchors Base on Channel 2**. If you are out of range please do a general call to have another houseboat relay a message for you. If you have a cellular telephone you can call us at **1-800-663-4026**. All service calls resulting from damage caused by the negligence of the Captain and/or his crew will be charged to the charter. Costs will be determined by Twin Anchors base.

## 4 ELECTRICAL SYSTEM AND COMPONENTS

---

### 4.1 BATTERIES

---

- Your houseboat is equipped with a start battery for your engine and generator. The start batteries will recharge only while the engine is running.
- You also have cabin/house batteries that charge only when the generator is running, do not let them drop below 12 volts at any time.
- Once your cabin/house batteries fall below 12 volts, you will need to start your generator to recharge the system.



TOGGLE SWITCH FOR  
HOUSE  
START  
GENERATOR

*Battery charging area*

### 4.2 BREAKER PANEL

---

The four columns of breakers are broken down as follows: You have two separate systems, the first 2 columns on the left are 12 volt DC, the 2 columns on the right are 120 volts AC.

- **12 VOLT DC SYSTEM:** These breakers operate from your cabin/house batteries
- **120 VOLT AC SYSTEM:** This is broken down into 2 sections: AC Bus 1 and AC Bus 2.
  - **AC Bus 1** - All breakers underneath this label need the generator running in order to operate.
  - **AC Bus 2** - All breakers underneath this label will operate without the generator running however you do need to check your power in your cabin/house batteries - if the voltage reading on your battery is low, there will not be sufficient power to operate the items in this area of the panel.



**\* There are three kinds of inverters on the boat - RC6, Xantrex, and Magnum - please check to see which one is on your boat and apply those directions specifically to your houseboat.**

### 4.3 RC6 REMOTE CONTROL PANEL

---

Lights indicate the voltage of your Cabin/House Battery Bank.



R6 Inverter Charging Panel

#### AMPS DC

#### GENSET IS RUNNING

The DC Amps indicator lights indicate the charge rate going into the cabin/house battery bank

#### GENERATOR IS NOT RUNNING

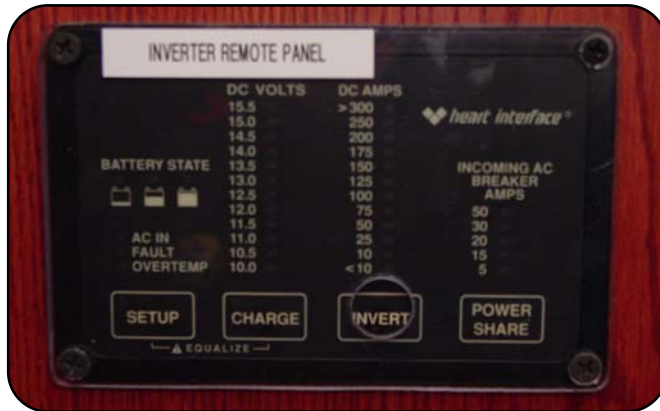
The DC Amps indicator lights tell you how much power you are using in the cabin.

#### BULK AND FLOAT CHARGE:

- Orange Bulk light- indicates batteries are charging.
- Green Float light- indicates batteries are completely charged.

#### 4.4 **XANTREX REMOTE PANEL:**

---



*Xantrex Inverter Panel*

#### **DC VOLTS**

- Lights indicate voltage that you have in your cabin/house batteries.
- Do not let this voltage get below 11.5-12.0- run generator to charge these batteries.
- When generator is running- the voltage indicator lights will vary.

#### **DC AMPS**

##### **Genset Running**

- The DC Amps indicator lights indicate the charge rate going into the cabin/house battery bank.
- When generator is running- the amperage indicator lights will vary.

##### **Generator is not running:**

- The DC Amps indicator lights indicate the amount of power you are using from the cabin/house battery bank.

##### **AC IN:**

- Indicates you are charging cabin/house batteries when generator is running.

#### 4.5 **MAGNUM REMOTE PANEL:**

---

This panel has a digital display which will indicate your battery voltage. Do not let the battery voltage get below 12.0 volts. Once the voltage reaches that level you will need to start your generator to charge your house batteries.



*Magnum Inverter Panel*

#### 4.6 GENERATOR (GENSET)

---

### **“PRIOR TO STARTING- RUN GENSET BLOWER FOR 3-5 MINUTES” AFTER GENERATOR IS STARTED– SHUT BLOWER OFF.**

- Before Starting make sure the large switch is in off position- see picture.
- The generator on your boat has a start switch located below the lower left side of the main breaker panel.
- Hold switch up to start position until you hear the generator running smoothly. Once your house/cabin batteries have reached a charge of 14 volts, you can shut off the generator by holding the same switch to the stop position.
- **Once generator is running, warm it up for 5-10 minutes prior to turning large switch to ship's gen.**
- When shutting off the generator turn the large switch to off – this takes the power load off the generator then you need to let the generator cool down for 5-10 minutes prior to switching it off.
- Let generator cool down for 1/2 hour prior to restarting.



## **5. APPLIANCES**

---

NOTE: MOST REFRIGERATORS HAVE OPERATING INSTRUCTIONS ON THE INSIDE OF THE DOOR OR IN THE REFRIGERATOR COMPARTMENT.

### **5.1 REFRIGERATOR**

---

#### **FOR THE BEST COOLING PERFORMANCE:**

This refrigerator will operate like your normal household fridge. In order to use the ice maker and water dispenser your water pump must be on.

Please do not overfill the freezer upon loading. Ensure that there is room for circulation around the fridge.

### **5.2 STORING YOUR FOOD**

---

- The food storage compartment is completely closed and unventilated, which is necessary to maintain the required low temperature for food storage. Foods with strong odors, should be covered.
- The coldest positions in the refrigerator are underneath the cooling evaporator and at the bottom of the refrigerator. PLEASE STORE YOUR BEVERAGES IN A COOLER.

### **5.3 STOVE AND OVEN OPERATION**

---

#### **STOVE**

- Push and turn knob until you hear a clicking action. Once burner ignites, turn knob to desired setting.

#### **OVEN**

- Your digital display clock must NOT be flashing otherwise your oven will not work. Just hold the clock button down to eliminate the flashing digital display.
- For specific operations REFER TO THE OWNERS GUIDE, WHICH CAN BE FOUND IN A DRAWER IN THE KITCHEN.

### **5.4 HOT WATER HEATER**

---

- Turn on gas supply. (PROPANE TANKS ARE LOCATED AT THE FRONT OF THE BOAT THE APPLIANCE SIDE).
- Turn on electrical power switch, which can be found at the electrical panel.
- Turn switch to ON position. If burner does not light on first try, the system will lockout. The LED light stays on. Once the red light goes out this means the hot water heater has lit. If lock out occurs before main burner lights and red light appears, turn switch to OFF, wait 5 seconds then turn the switch to ON position. This will restart the ignition cycle. The first start-up of the heater may require several ignition cycles before all air is purged from the gas lines.

## **5.5 PROPANE FURNACE**

---

- At the electrical panel, the furnace or heater breaker must be turned on.
- You simply need to turn the furnace switch located on the bottom of the thermostat to ON. And adjust your temperature gauge to the desired temperature.
- If your furnace does not come on check your propane tanks to be sure they are not empty (PROPANE TANKS ARE LOCATED AT THE FRONT OF THE BOAT THE APPLIANCE SIDE).
- If they are on, and your furnace still won't come on call Twin Anchors Base to troubleshoot the problem.

## **5.6 AIR CONDITIONING**

---

- Air conditioning is controlled with the thermostat. ensure the generator is running and the breaker on the electrical panel is on.

## 5.7 **BBQ**

---

- Open the lid of the BBQ prior to lighting, never light a BBQ with the lid closed, serious injury can result.
- Your BBQ propane is connected to the Appliance Side. Turn valve on located at bottom left of the BBQ on the wall.
- Should your start button on the BBQ fail to work you can light the BBQ with a match.
- Look for a hole on the underside of the BBQ.
- Light a match or BBQ lighter.
- While holding the lit match to the hole turn on the knob at the BBQ.
- The BBQ should ignite.
- Do Not use BBQ while houseboat is in motion.

PLEASE CLEAN BBQ AFTER EVERY USE.



# WARNING!

KEEP FACE AND ARMS AWAY FROM THE TOP OF THE BBQ WHILE LIGHTING.

IF YOU SMELL GAS AT ANY TIME:

- Turn off all the propane tanks
- Open as many doors and windows as possible
- Do not smoke or have any open flames
- Do not touch electrical switches
- Extinguish any open flames
- Check all your appliances for a valve that may have been left on.
- Check oven control knob to make sure it is in the "PILOT OFF" position.
- If the problem persists, call Twin Anchors base on Channel 2

## 5.8 FIREPLACE

---

- Your fireplace should have been lit prior to your departure. If it does not turn on when you turn your fireplace thermostat up look into the fireplace to see if you can see the pilotlight is lit. If you do not see a small flame near the mid to right hand side, you will need to relight the pilot light by taking the following steps. a. Open bottom grill on the fireplace - see picture below. b. Turn gas valve to pilot and press it in. c. Press ignitor in several times - you should see sparks near the pilot light location in the fireplace area - once flame is lit - stop pressing the ignitor and allow the flame to burn for approximately 60 seconds - then release the gas valve and turn it to the ON position. d. Wait 3 to 5 minutes prior to turning the fireplace thermostat to desired temperature.



Thermostats



Fireplace - Off/On Pilot Switch

**WARNING!**

KEEP CLOTHING, TOWELS, AND FOOTWEAR AWAY FROM FIREPLACE. IT IS NOT TO BE USED AS A "DRYING CENTRE" AS THE VENTS GET EXTREMELY HOT AND ITEMS WILL CATCH FIRE.

KEEP SMALL CHILDREN AWAY FROM FIREPLACE GLASS.

## **5.9 DISHWASHER**

---

Please do not operate your dishwasher while your house boat is unning. Make sure the following are on:

- Generator
- Water Pump
- Dishwasher Breaker

The dishwasher should run like the one at home, there is less water pressure though so we do advise you to rinse your dishes prior to putting them into the dishwasher. The dishwasher should run like the one at home, there is less water pressure though so we do advise you to rinse your dishes prior to putting them into the dishwasher.

## **5.10 WASHER & DRYER**

---

This washer & dryer works just like the ones you have at home. The generator must be running, otherwise use it accordingly. Please do not put heavy wet towels into the dryer as this may cause damages.

## **5.11 STEREO ON UPPER DECK**

---

Ensure breaker is on at the electrical panel. Power on unit, it should work like the one at home. This sterei will only play on the upper deck.

## **5.12 HOME THEATRE/STEREO SYSTEM**

---

Your houseboat is equipped with either one of the following two systems. Please refer to your system to determine which one you have on your houseboat then follow the appropriate operating instructions.

**{ WARNING!**

**DO NOT DISCONNECT OR CONNECT ANY WIRES IN THE REAR OF THE STEREO SYSTEM. DOING SO WILL RESULT IN A FINE DETERMINED BY TWIN ANCHORS REPRESENTATIVES UPON RETURN TO THE MARINA!!**

## **ONKYO SYSTEM**

---

### **> to play a DVD:**

1. Turn ON TV/Stereo Breaker.
2. Turn ON Onkyo Receiver/DVD
3. Turn ON TV - set to VIDEO 1 input
4. Open tray on Onkyo receiver/DVD
5. Insert DVD - close tray - do not push the tray with your hand - use the button, press play

If you get sound but no picture, make sure the progressive scan button on the Onkyo receiver/DVD has not been turned on.

### **> to play a CD:**

1. Turn ON TV/Stereo Breaker.
2. Turn ON Onkyo Receiver/DVD - set to TAPE MD/HD input
3. Turn ON Onkyo 6 disc CD player
4. Open tray, insert CDs, close tray. (do not push the tray with your hand - use the button)
5. Press play on the CD player.

### **> to watch SATELLITE TV:**

1. Turn ON TV/Stereo Breaker.
2. Turn ON Onkyo Receiver/DVD - set to VIDEO 1 input
3. Turn ON Satellite Receiver
4. Turn ON TV - set to VIDEO 1 input
5. Aim the satellite dish.
  - to aim the dish, use the satellite remote -
  - > Press MENU - 6 -1 -1
  - > This will bring up the signal strength screen
  - > Go to the dish and aim.
  - > The satellite is located at 147 degrees south and approx. 27 degrees elevation.
  - > You will need a minimum of 55% signal strength to watch TV. More is better.
  - > When you have sufficient signal strength lock dish in position.
  - > Press CANCEL on remote until main screen appears.
  - > Go to desired channel.

• If you want to watch TV and listen to CDs at the same time, put the TV on Channel 3.

• On boats with the TRAC STAR satellite dishes, the TRAC STAR will power up when the breaker is turned on. It should find the ExpressView 91 satellite in approx. 5 minutes. **DO NOT CHANGE ANY OF THE SETTINGS ON THE TRAC STAR CONTROLLER OR YOU WILL NOT BE ABLE TO WATCH TV.**

### **> to play SONY PS2:**

1. Turn ON TV/Stereo Breaker.
2. Turn ON PS2 Player
3. Turn ON TV - set to VIDEO 1 input
4. Open tray, insert disc, close tray.
5. Play your game.

### **> to use AUXILLARY INPUT CONNECTION:**

1. Turn ON TV/Stereo Breaker.
2. Turn ON Onkyo Receiver/DVD - set to VIDEO 2 input
3. Connect desired auxillary component into black box -i.e. MP3 player, i-pod, satellite radio.
4. If you are using a video feed, turn TV to VIDEO 1 input.

## **YAMAHA SYSTEM**

---

### **> to play a DVD:**

1. Turn ON TV/Stereo Breaker.
2. Turn ON Yamaha Receiver/DVD
3. Turn ON TV - set to VIDEO 1 input
4. Open tray on Yamaha receiver/DVD
5. Insert DVD - close tray - do not push the tray with your hand - use the button, press play

If you get sound but no picture, make sure the progressive scan button on the Yamaha receiver/DVD has not been turned on. There will be a small green light beside the word PROGRESSIVE on the front right hand side of the display panel.

### **> to play a CD:**

1. Turn ON TV/Stereo Breaker.
2. Turn ON Yamaha Receiver/DVD - set to MC/CD-R input
3. Turn ON Yamaha 5 disc CD player
4. Open tray, insert CDs, close tray (do not push the tray with your hand - use the button)
5. Press play on the CD player. To play in random mode, you must use the black YAMAHA CD remote to set.

### **> to watch SATELLITE TV:**

1. Turn ON TV/Stereo Breaker.
2. Turn ON Yamaha Receiver/DVD - set to VIDEO 1 input
3. Turn ON Satellite Receiver
4. Turn ON TV - set to VIDEO 1 input
5. Aim the satellite dish.
  - to aim the dish, use the satellite remote -
  - > Press MENU - 6 -1 -1
  - > This will bring up the signal strength screen
  - > Go to the dish and aim.
  - > The satellite is located at 147 degrees south and approx. 27 degrees elevation.
  - > You will need a minimum of 55% signal strength to watch TV. More is better.
  - > When you have sufficient signal strength lock dish in position.
  - > Press CANCEL on remote until main screen appears.
  - > Go to desired channel.

• If you want to watch TV and listen to CDs at the same time, put the TV on Channel 3.

• On boats with the TRAC STAR satellite dishes, the TRAC STAR will power up when the breaker is turned on. It should find the ExpressView 91 satellite in approx. 5 minutes. **DO NOT CHANGE ANY OF THE SETTINGS ON THE TRAC STAR CONTROLLER OR YOU WILL NOT BE ABLE TO WATCH TV.**

### **> to play SONY PS2:**

1. Turn ON TV/Stereo Breaker.
2. Turn ON PS2 Player
3. Turn ON TV - set to VIDEO 3 input
4. Open tray, insert disc, close tray.
5. Play your game.

### **> to use AUXILLARY INPUT CONNECTION:**

1. Turn ON TV/Stereo Breaker.
2. Turn ON Onkyo Receiver/DVD - set to VIDEO 2 input
3. Connect desired auxillary component into black box -i.e. MP3 player, i-pod, satellite radio.
4. If you are using a video feed, turn TV to VIDEO 1 input.